



2 The Cygnets | | Shoreham-By-Sea | BN43 5UH

WB
WARWICK BAKER
ESTATE AGENT

WARWICK BAKER



2 The Cygnets | | Shoreham-By-Sea | BN43 5UH

£470,000

*** £470,000***

WARWICK BAKER ESTATE AGENTS ARE DELIGHTED TO OFFER TO THE MARKET THIS EXTREMELY WELL PRESENTED SEMI DETACHED HOUSE IN THE CYGNETS.

SITUATED IN A CUL DE SAC MINUTES FROM THE TOWN CENTRE AND MAIN LINE RAILWAY STATION, THE PROPERTY BOASTS A 17'8" LIVING ROOM, 15'2" CONSERVATORY, DINING ROOM AND MODERN KITCHEN ON THE GROUND FLOOR, THREE BEDROOMS AND A MODERN BATHROOM ON THE FIRST FLOOR. OUTSIDE THERE IS A SMALL GARDEN AND A GARAGE EN BLOC. VENDOR SUITED.

- SEMI-DETACHED HOUSE
- MODERN FITTED KITCHEN
- VENDOR SUITED
- THREE BEDROOMS
- 15'2" CONSERVATORY
- CALL NOW 01273 461144
- 17'8" LIVING ROOM
- REAR GARDEN
- DINING AREA
- GARAGE EN BLOC

ENTRANCE HALL

Stairs leading up the the First Floor Landing, door too

LIVING ROOM

17'8 x 13'1 (5.38m x 3.99m)

Westerly aspect bay window, opening to

DINING AREA

9'1 x 8'2 (2.77m x 2.49m)

Door to Conservatory and

KITCHEN

9'1 x 7'8 (2.77m x 2.34m)

Modern kitchen with a range of wall and base units, work surfaces, inset sink unit, cupboards over, space for appliances, rear aspect window.

CONSERVATORY

15'2 x 9'2 (4.62m x 2.79m)

French doors leading out onto the rear garden.

FIRST FLOOR LANDING

Doors giving access to all rooms.

BEDROOM ONE

14'8 x 8'11 (4.47m x 2.72m)

Front aspect window.

BEDROOM TWO

9'7 x 8'11 (2.92m x 2.72m)

Rear aspect window.

BEDROOM THREE

9'4 x 7'1 (2.84m x 2.16m)

Front aspect window.

BATHROOM

Modern refitted suite, panel enclosed bath with shower over, vanity unit with inset sink unit, W.C.

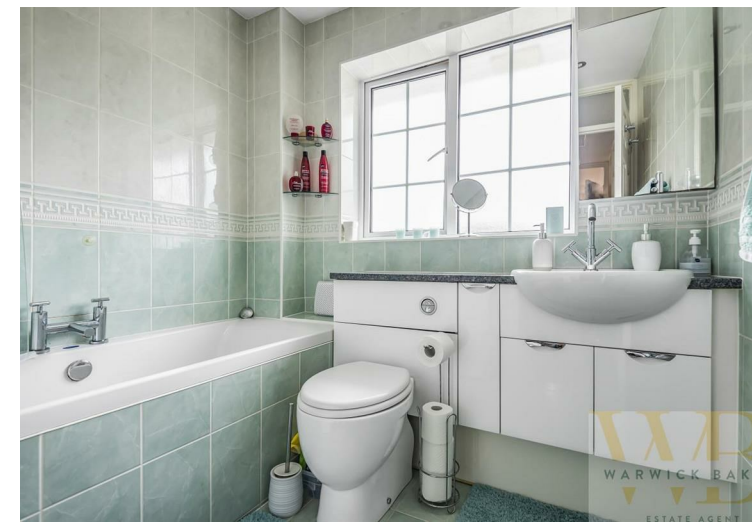
OUTSIDE

REAR GARDEN

Predominately laid to lawn with flower and shrub borders.

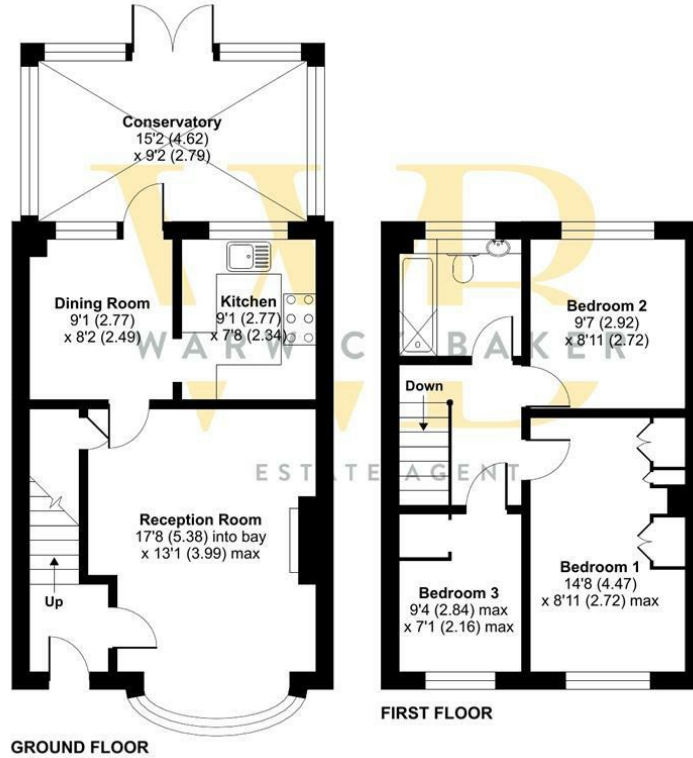
GARAGE - EN BLOC

With up and over door.

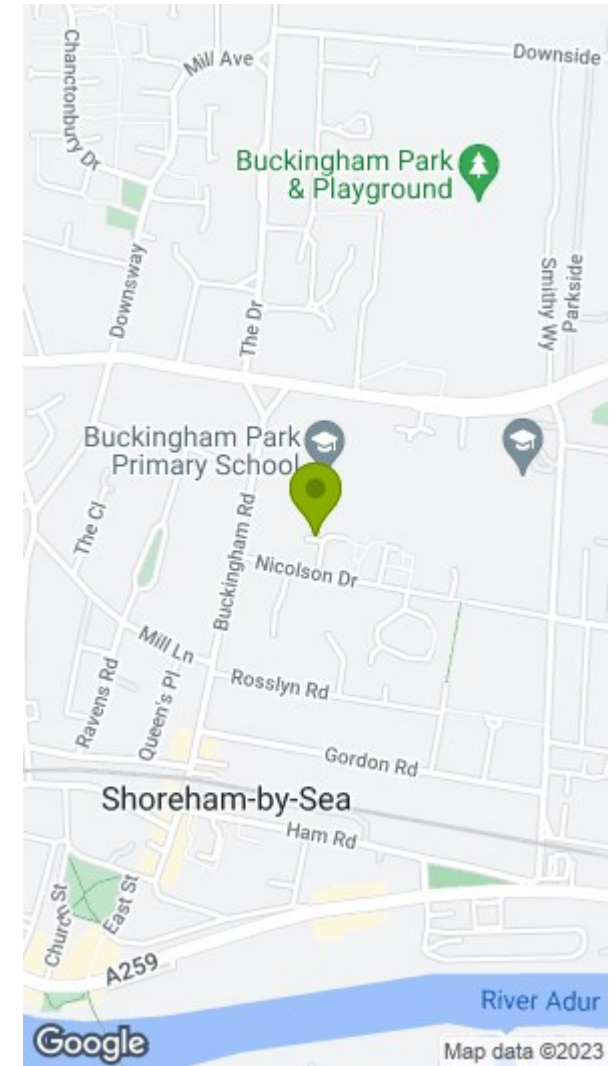


The Cygnets, Shoreham-by-Sea, BN43

Approximate Area = 979 sq ft / 91 sq m
For identification only - Not to scale



RICS Certified Property Measurer
Floor plan produced in accordance with RICS Property Measurement Standards incorporating International Property Measurement Standards (IPMS2 Residential). © richwcom 2022. Produced for Warwick Baker Estate Agent Ltd. REF: 892937



Disclaimer

- * These particulars are intended to give a fair and substantially correct overall description for the guidance of intending purchasers and do not constitute an offer or part of a contract. Prospective purchasers and/or lessees ought to seek their own independent professional advice.
- * All descriptions, dimensions, areas, references to condition and necessary permissions for use and occupation and other details are given in good faith and are believed to be correct, but any intending purchasers should not rely on them as statements or representations of fact, but must satisfy themselves by inspection or otherwise as to the correctness of each of them.
- * All measurements are approximate

Energy Efficiency Rating		Environmental Impact (CO ₂) Rating	
Current	Potential	Current	Potential
Very energy efficient - lower running costs		Very environmentally friendly - lower CO ₂ emissions	
(92 plus) A		(92 plus) A	
(81-91) B		(81-91) B	
(69-80) C		(69-80) C	
(55-68) D		(55-68) D	
(39-54) E		(39-54) E	
(21-38) F		(21-38) F	
(1-20) G		(1-20) G	
Not energy efficient - higher running costs		Not environmentally friendly - higher CO ₂ emissions	
England & Wales	EU Directive 2002/91/EC	England & Wales	EU Directive 2002/91/EC